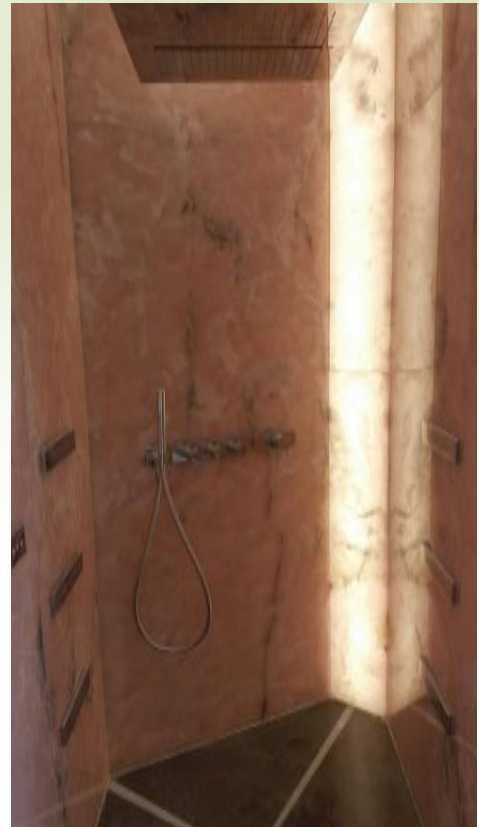


Case Study. Pink onyx backlighting in a master bathroom .



The aim of project was backlight homogeneously and diffusely three slabs of pink onyx in a harsh environment with high humidity and risk of condense.

The goal of a marble worker located in Valpolicella (Verona-ITALY) was to backlight three corners of a master bathroom in a villa in the Principality of Monaco. The main project issue was the high humidity content at which the system used for the backlighting of marble is subject due to the shower box and moreover in the same box there is placed one of three marble slab.

The 2 cm of thickness of the three marble slabs reduces the material translucency, forcing the use of a high luminous flux lamp; for this reason the conventional LED light panels with edge lighting technology are not suitable and it needs a direct backlighting such as the AvanBrite Velarium LED curtain.

The Velarium LED Curtain is a backlighting module consisting of a set of rigid LED bars connected to two electrical wires, which provide power as well as structural support. Number of bars and pitch can be easily customized to meet the client's size requirements.



The Velarium LED bars.

The three onyx marble are 270 cm high and 25cm width and are vertically placed in the three bathroom corners. In order to guarantee the full functionality in a harsh environment like a bathroom the LED bars were coated and sealed.

The coating process consist in a resin film that prevents condensed moisture from damaging the LED bar or reducing the characteristics.

There are not any risk from electrical safety point of view since the LED bars are powered at low voltage (24V DC) through isolated power supplies.

Project highlights

- 3 LED curtain Velarium 25x270cm
- LED curtain luminous flux: 10000 lm
- CCT 4000K, CRI >80
- Voltage power supply 24V DC
- Dimmable
- Maximum power consumption per LED curtain 110 Watt ca
- LED curtain weight < 1Kg

The three Velarium LED curtains are mounted on an aluminum white painted panel with a LED bar pitch of 4 cm, the resulting assembled part is kept in place at 4 cm from above marble panel.

Each LED curtain is able to provide a luminous flux of 10000 lm with a maximum power consumption of 110 Watt. The LED curtains are dimmable with a single remote controller providing an overall homogeneous effect.



A corner of master bathroom.

The customer: “As usual in application like this the support during the developing and ease of installation are fundamentals. We are enthusiastic of overall luminous resulting.”





AvanBrite Srl

Via dell'Artigianato, 91
30023 Concordia Sagittaria (VE)
ITALY

Phone: +39 0421 700117

info@avanbrite.com

www.avanbrite.com

Follow us on:

 [@avanbrite](https://twitter.com/avanbrite)

 pinterest.com/avanbrite

 linkedin.com/company/avanbrite